



# Grand Theater

415 North Fourth Street  
Wausau, Wisconsin 54403  
Office 715.842.0988 Fax 715.842.8715  
[www.grandtheater.org](http://www.grandtheater.org)

## Technical Information

**Table of Contents**

**General Information** ..... 2 - 6  
Mailing Address, Web Address, Technical Personnel, Programming & Box  
Office Personnel, Area Hotels, Bed & Breakfast, Taxi Services, Airport,  
Restaurants, Suggested Caterers, Handicapped Access, Emergency Contacts,  
Parking, Dry Cleaners, Travel Directions & Time Zone

**Introduction** ..... 7

**Management** ..... 7  
Production Room, Green Room, Stage Manager’s Location, Crew,  
Handicapped Access, Policies

**Load-in Facilities** ..... 8  
Driveway & Docks, Load-In Area, Elevator

**Carpentry** ..... 9 - 11  
Seating, Stage Dimensions, Orchestra Pit, Stage Floor, House Drapery,  
Gridiron, Lineset Information, Loading Gallery, Pin Rail, Crossover, Access

**Lighting** ..... 12 - 15  
Power, Dimmers, Control Consoles, Circuit Distribution, Front of House  
Transfer, Front of House Position, Equipment Inventory, Followspots, Cable  
& Hardware, Film, Video, Projection Equipment

**Sound** ..... 15 - 17  
Power, Wiring, Control Location, Hearing Assist System,  
Monitor/Paging System, Production Communication, Equipment Inventory

**Props** ..... 17 - 18  
Orchestra Pit, Orchestra Equipment, Instruments, Orchestra Shell Ceiling,  
Platforms, Dance Floor, Lectern

**Wardrobe** ..... 18 - 19  
Dressing Rooms, Wardrobe Area, Irons & Ironing Boards, Steamer,  
Washer/Dryer, Garment Racks, Notes

**Attachments**

- Downtown Map
- Seating Chart
- Lineset Schedule
- Plan Drawing – Basement
- Plan Drawing – Main Floor
- Centerline Section

## General Information

Revised 2/2015

Managed by:

THE PERFORMING ARTS FOUNDATION, INC.

## Mailing Address

401 Fourth Street  
Wausau, Wisconsin 54403-5420

Box Office Phone: (715) 842 - 0988  
Fax Number: (715) 842 - 8715  
Stage Phone/Production Phone: (715) 842 - 0303  
Touring Production Fax/Data Supplied as Needed

## Web Address

[www.grandtheater.org](http://www.grandtheater.org)

## Performing Arts Foundation Technical Personnel

Mark Weiss, Technical Director  
Email: [mweiss@grandtheater.org](mailto:mweiss@grandtheater.org)

Valerie Charneski, Assistant Technical Director  
Email: [vcharneski@grandtheater.org](mailto:vcharneski@grandtheater.org)

## Performing Arts Foundation FOH Personnel

Michael Loomis, Event Manager  
Email: [mloomis@grandtheater.org](mailto:mloomis@grandtheater.org)

## Performing Arts Foundation Programming & Box Office Personnel

Sean Wright, Executive Director  
Email: [swright@grandtheater.org](mailto:swright@grandtheater.org)

Merry Little, Gen. Mgr./Associate Dir.  
Email: [mlittle@grandtheater.org](mailto:mlittle@grandtheater.org)

Melanie Schumann, Marketing Director  
Email: [mschumann@grandtheater.org](mailto:mschumann@grandtheater.org)

Joel Freiberg, Box Office Manager  
Email: [jfreiberg@grandtheater.org](mailto:jfreiberg@grandtheater.org)

**Area Hotels** <http://visitwausau.com/wheretostay>

Plaza  
201 N 17<sup>th</sup> Ave  
Wausau, WI 54401  
715-845-4341  
1-800-754-9728  
[www.plazawausau.com](http://www.plazawausau.com)  
2 miles from theater

Hampton Inn  
615 S 24<sup>th</sup> Ave  
Wausau, WI 54401  
715-848-9700  
1-800-426-7866  
[www.hampton-inn.com](http://www.hampton-inn.com)  
2.5 miles from theater

Courtyard by Marriott  
1000 S 22<sup>nd</sup> Ave  
Wausau, WI 54401  
715-849-2124  
1-800-321-2211  
[www.courtyard.com](http://www.courtyard.com)  
2.5 miles from theater

La Quinta Inn  
1910 Stewart Ave  
Wausau, WI 54401  
715-842-0421  
1-800-230-4134  
2.5 miles from theater

Super 8  
2006 Stewart Ave  
Wausau, WI 54401  
715-848-2888  
1-800-800-8000  
2 miles from theater

Best Western  
2901 Martin Ave  
Wausau, WI 54401  
715-842-1616  
1-800-528-1234  
4.5 miles from theater

Jefferson Street Inn  
201 Jefferson St  
Wausau, WI 54403  
715-845-6500  
1-866-855-6500  
[www.jeffersonstreetinn.com](http://www.jeffersonstreetinn.com)  
2 blocks from theater

Rib Mountain Inn  
2900 Rib Mountain Way  
Wausau, WI 54401  
715-848-2802  
[www.ribmtinn.com](http://www.ribmtinn.com)  
5 miles from theater

**Bed & Breakfast**

Everest Inn  
601 McIndoe St  
Wausau, WI 54403  
715-848-5651

**Taxi Services**

Wausau Taxi  
715-848-8294

Metro Cab  
715-849-4222

All American Taxi  
715-355-0899

**Airport**

Central Wisconsin Airport – serviced by  
<http://www.fly-cwa.org/>

Delta Reservations 1-800-221-1212  
United Reservations 1-800-864-8331  
American Reservations 1-800-433-7300

**Restaurants (for more options and menus please advance with the Event Manager)**

For a list of local restaurants go to <http://visitwausau.com/wheretoeat>

The Mint Café  
422 N 3<sup>rd</sup> St  
715-845-5879  
1 block from theater

Back When Café  
606 N 3<sup>rd</sup> St  
715-848-5668  
2 blocks from theater

Peking Chinese Restaurant  
221 Scott St  
715-842-8080  
1 block from theater

La Prima Deli  
607 N 3<sup>rd</sup> St  
715-848-1260  
2 Blocks from theater

City Grill  
203 Jefferson St  
715-842-9898  
2 Blocks from Theater

2510 Restaurant  
2510 Stewart Ave  
715-845-2510  
2.5 Miles for theater

**Suggested Caterers**

The Mint Café  
422 N 3<sup>rd</sup> St  
715-845-5879

**Handicapped Access**

11 wheelchair locations on the main floor  
2 wheelchair locations in the balcony  
Handicapped restrooms are available at balcony and main floor levels  
Stage, dressing rooms and orchestra pit are handicapped accessible  
Limited handicapped parking is available during performances.  
Infrared hearing assistance system available for main and balcony seating

## Emergency Contacts & Medical Services

### Emergency - Fire – Police – Ambulance - 911

Fire Department Non-Emergency 715-261-7900  
Police Non-Emergency 715-849-7798  
Hospital Emergency Department 715-847-2160  
Ambulance Billing 715-261-6616

#### Hospital

Aspirus Wausau Hospital  
333 Pine Ridge Blvd  
715-847-2160

#### Walk-in Clinic

Wausau Medical Center  
2727 Plaza Dr  
715-847-3281

#### Pharmacy

Walgreen Pharmacy  
105 Central Bridge St  
715-845-8278

#### Ophthalmology

Eye Clinic of Wisconsin  
Wausau  
715-845-8201

#### Ear, Nose & Throat

Dr. Garry Sach  
425 Pine Ridge Blvd  
715-845-9634

#### Chiropractor

Dr. Scott Bautch  
1915 N 6<sup>th</sup> St  
715-842-3999

#### Dentistry

Dr. Frederick Prehn  
413 Jefferson St  
715-842-1270

#### Bone & Joint

Bone & Joint Clinic  
425 Pine Ridge Blvd  
715-842-3202

#### Obstetrics & Gynecology

Dr. Robin T Ashwell  
2720 Plaza Dr Suite 2100  
715-847-2475

#### Family Practice

Dr. Frank Rubino  
2801 Westhill Dr  
715-842-3284

#### Massage Therapy

Massage Matters  
1310 N 6<sup>th</sup> St  
715-842-5491

#### Acupuncture

Dr. Mark Ensweiler  
3000 Emery Dr  
715-675-6771

## **Parking**

Parking is available for up to two tractor-trailers and three busses. Personal vehicles may be parked in the loading docks and bus parking. Additional parking is available on the street or in city metered parking.

## **Travel Directions**

### From the East or West

From Highway 29 take the exit for 51/39 going north. Take, Exit 192 – Bus52, follow Bus 52 east crossing the Wisconsin River to Jefferson Street. Turn right on Jefferson Street past the Theater to Sixth Street. Turn left on Sixth Street (one way). Follow Sixth Street to Scott Street. Left on Scott Street, loading dock is off Scott Street on the left.

### From the South

From Highway 51 going north. Take, Exit 192 – Bus52, follow Bus 52 east crossing the Wisconsin River to Jefferson Street. Turn right on Jefferson Street past the Theater to Sixth Street. Turn left on Sixth Street (one way). Follow Sixth Street to Scott Street. Left on Scott Street, loading dock is off Scott Street on the left.

### From the North

From Highway 51 going south. Take, Exit 192 – Bus52, follow Bus 52 east crossing the Wisconsin River to Jefferson Street. Turn right on Jefferson Street past the Theater to Sixth Street. Turn left on Sixth Street (one way). Follow Sixth Street to Scott Street. Left on Scott Street, loading dock is off Scott Street on the left.

## **Time Zone**

Central Standard Time

## **Introduction**

This document is intended to serve as a technical introduction to the physical specifications of the stage at the Grand Theater. It is to be used as a guide to the facilities, the equipment and the logistics of the Grand Theater. It is by no means expected to serve as the last word; some equipment may be under repair, lost, damaged or replaced. If you have any questions please do not hesitate to call the Technical Director for any clarification to questions that may arise.

## **Management**

### **Production Room**

The green room, as well as any of the six dressing rooms in the basement may be used as a production office. Each of these rooms has the capability of addressing up to four phone lines that may be used for phone/fax/internet. Copies may be made and faxes sent using the Performing Arts Foundation Office in the same building.

### **Green Room**

Located on the main floor, behind the stage. It is 10' 10" wide by 38' long with a door at each end. One door leads into the loading dock area, and the other one leads into a hallway adjacent to the stage left access door.

### **Stage Manager's Location**

Capabilities of paging to the dressing rooms and support areas are located downstage right or downstage left.

### **Crew**

Paid community staff.

### **Handicapped Access**

There is elevator access to dressing rooms from the loading dock area, and a wheelchair lift to the orchestra pit at playable level. All makeup stations are at ADA compliant handicapped height. Handicapped restrooms are available on the main floor, dressing room area, and in the loading docks.

### **Policies**

Building is a smoke, e-cigarette and weapons free environment  
Building normally opens for performances one hour prior to scheduled start time.  
House normally opens 1/2 hour prior to scheduled start time.  
Production staff must be informed of the use of any pyrotechnics, smoke, fog, haze, or strobes in order to regulate building systems so an alarm does not sound during performances.  
For the safety of patrons the Orchestra pit does not change height and the house lights do not blink while patrons are in the house.



## **Load-in facilities**

### **Driveway & Docks**

Located off of Scott Street (see Travel Directions page & Attachment). The driveway is 100' long with the first 53' from the docks being at a grade of 2% and the rest of the driveway at an 8% grade up to street level. Width between retaining walls is 23'2". There are two docks at stage level and each is equipped with an overhead coiling door, truck bumpers, weather seals, locks and levelers to accommodate different height trucks. Level height for the docks is 3'10" and they are capable of extending down to 3'4". The overhead doors are 8' wide by 9'7" high.

There is also a pair of swinging doors at street and stage level that leads into the loading dock area. The doors when opened measure 8' wide by 7'7" high.

Parking is available for up to two tractor-trailers and three busses. Shore power in the form of one tie-in point, and 2 plugs with a capacity of 50 amps @ 208 volt 2 phase, 4 wire is available.

### **Load-in Area**

The main loading area is 1148 ft<sup>2</sup> with a ceiling height of 19'6". The area leading into the docks from the street level doors is 352 ft<sup>2</sup> with a ceiling height of 7'4". Access to the stage is obtained through a set of swinging acoustical doors located upstage center with a total opening of 10' wide by 19'4" high.

### **Elevator**

Dressing rooms are accessible by stairwells or an elevator. The dimensions of the elevator cab are 8'3" wide by 9'11" deep by 9'6" high, with a door opening of 6'0" wide by 7'0" high.

## Carpentry

### Seating

Maximum Main Floor (Orchestra Pit Seated)	734
Maximum Main Floor (Orchestra Pit Not Seated)	700
Maximum Balcony	<u>480</u>
Total (Orchestra Pit Seated)	1214
Total (Orchestra Pit Not Seated)	1180
Seating Chart – See Attachments	

### Stage Dimensions

Proscenium Width	41' 9"
Proscenium Height, @ center	25' 4"
Proscenium Fixed trim height	19' 1"
Apron Width	38' 3"
Apron Depth, at center with orchestra pit up	15' 6"
Apron Depth, with orchestra pit down	3' 4"
Stage height from audience floor	3' 6"
Width, wall to wall	86' 0"
Width, bustle opening	42' 0"
Height, bustle opening	24' 0"
Depth, curtain line to bustle opening	27' 9"
Depth, bustle opening to back wall	16' 0"
Depth, curtain line to last batten	25' 10"
Height, stage floor to gridiron	56' 0"
Height, gridiron to stage roof	5' 6"
Height, stage floor to bustle steel	25' 9"
Offstage space, stage left	11' 0"
Offstage space, stage right	21' 9"
Obstructions Upstage Right & Downstage Right	
Usable floor area - Stage	2075 ft <sup>2</sup>
Usable floor area - Bustle	1376 ft <sup>2</sup>
Usable floor area - Loading Dock	1532 ft <sup>2</sup>

### Orchestra Pit – Gala Spiralift

Width	38' 3"
Depth, at center	12' 2"
Depth, at edges	7' 6"
Depth under stage at pit level	6' 0"
Total depth at pit level (Upstage to Downstage)	18' 2"
Playing depth below stage	8' 0"

Notes: The orchestra pit is curved

There are three columns supporting the apron located in the orchestra pit.

### Stage Floor

The stage floor is 4' x 8' sheets of Masonite screwed over two cross-laid layers of 3/4" plywood and is floating on a 7/8" foam panel. The color is flat black.

**- - Lagging into the stage floor is prohibited - -**

### House Drapery

House Curtain – Burgundy, manually operated, nylon/cotton rope, single purchase, in a lattice track, operates in a guillotine fashion only from downstage left.

Fire Curtain – The fire curtain is located on the upstage side of the proscenium opening. It is constructed of sealed asbestos and operates in a guillotine fashion by fusible links or by a control rope located downstage right

<u>Item</u>	<u>#</u>	<u>Material</u>	<u>Size – Width x Height</u>
Legs	1 Pair	Black Velour	6'4" x 26'
Legs	4 Pair	Black Velour	12'4" x 26'
Borders	1 Pair	Black Velour	41' x 10'
Borders	3 Pair	Black Velour	41' x 8'
Screen Masking	1	Black Velour	50' x 12'
Black Traveler	2 Panels	Black Velour	28'6" x 26'
Black Traveler	4 Panels	Black Velour	15' x 26'
White Scrim	1	Sharkstooth	48' x 29'4"
Black Scrim	1	Sharkstooth	52' x 29'4"

### Gridiron

Grid extends over the entire stage. The floor is made up of 3" steel channels, spaced 6" off center. Five overhung 10" loftblock wells are spaced 12' apart. The grid is capable of supporting over 16 tons of weight.

### Line Set Information

#### Type

The counterweight system is a hand operated, Multiline II, single purchase, T-track guided system, with the lock rail located stage left. Battens are all 1 1/2" outside diameter schedule 80 pipe, 56' long with five lift lines spaced 12' apart.

#### Line Set Schedule

See Attachments

### Loading Gallery

The loading bridge is located stage left and is reached by a spiral staircase located upstage left. It is 50' 8" above the stage deck with 13,000 pounds of weight available in 18 lb and 36 lb sizes.

### Pin Rail

Pin rails are located on stage left and stage right. The stage left pin rail is 22' 8" above the stage deck, and is reached by a spiral staircase in the upstage left corner of the stage. The stage right pin rail is located 21' 6" above the stage deck, and is reached by a spiral staircase in the bustle.

### Crossover

The bustle is used as a crossover space. In addition to the bustle opening, there are doors in the upstage wall, off stage left & right 3'7" wide by 7'10" tall.

### Access

There is no access to the stage from the house that a performer or audience member will not disappear from audience view for a short amount of time. From house left (stage right) there is a short set of steps and an access door to the stage. The dressing rooms are accessed by going through the bustle, and down one flight of steps on stage right. On stage left there is an additional short hallway at stage level before reaching the steps to the dressing rooms. The greenroom is located behind the bustle and is reached from a door in the upstage left corner of the bustle.

## Lighting

### Power

2 @ 400 amp, 3 phase, 4 wire, 120/208 volt, cam-lok supplied or tails needed, with one located upstage right on the stage, and the other upstage right in the bustle.

1 @ 200 amp, 3 phase, 4 wire, 120/208 volt, cam-lok supplied or tails needed, with isolated ground for audio, located upstage right in the bustle.

1 @ 100 amp, 3 phase, 4 wire, 120/208 volt, tails needed, located upstage right in the bustle for rigging.

1 @ 100 amp, 3 phase, 4 wire, 120/208 volt, located upstage right in the bustle that feeds a Square D breaker panel, with 20 amp breakers available.

20 amp Edison receptacles located throughout the stage area.

4 – 20 Amp Edison receptacles with isolated ground located at stage level, two are stage right and two are stage left.

4 – 20 Amp Edison receptacles with isolated ground located in the orchestra pit.

### Dimmers

2 Strand CD-80 AMX racks with 188 - 2.4kw dimmers and 2 - 6kw dimmers

### Control Consoles

Main - Electronic Theater Controls Express 48/96, which must be used with two DMX to AMX converters owned by the house.

Back-up – Strand Mantrix II with two-scene pre-set and 12 control channels with no memory

### Circuit Distribution

All circuits are 20 amp, 2.4kw with stage pin plugs, except for two 50 amp, 6kw.

<u>Location</u>	<u>Quantity</u>	<u>Circuit Numbers</u>
FOH Slot	27	1 through 27
FOH Slot	1 @ 6kw	189
House Left Box Boom	12	28 through 39
House Right Box Boom	12	40 through 51
Balcony rail	12	52 through 63
First Electric	24	64 through 87
Second Electric	18	96 through 113
Third Electric	16	114 through 129
Fourth Electric	18	130 through 147
Fifth Electric	8	88 through 95
Drop Box Downstage Left	3	148 through 150
Drop Box Upstage Left	3	151 through 153
Drop Box Downstage Right	3	154 through 156
Drop Box Upstage Left	3	157 through 159
Floor Pockets Stage Right (3)	10	160 through 169
Floor Pockets Stage Left (3)	10	179 through 188
Rear Wall Boxes Stage Left	4	170 through 173
Rear Wall Boxes Stage Right	5	174 through 178
Rear Wall Box Stage Left	1 @ 6kw	191
Total: 190		

### Front of House Transfer

Located downstage left the panel has all balcony rail circuits and the even numbered circuits from the FOH, right and left box boom positions. Each circuit is rated for 20 amps and is equipped with stage pin plugs. In addition there is in the inventory an Electronic Theatre Controls Response Converter that is capable of accepting DMX-512 and outputting AMX-192 which is readable by our dimmers. It is only capable of addressing dimmer numbers 1 through 96.

### Front of House Positions

Front of house slot is 68' to the curtain line and 38 degrees.

Balcony rail is 60' to curtain line and 12 degrees.

Box Booms are a 39' throw and 25 degrees off of the centerline. The box boom position does not work for reaching the close 1/3 of the stage.

## Equipment Inventory

<u>Qty</u>	<u>Type</u>	<u>Wattage</u>	<u>Frame Size</u>
12	6" Altman Fresnel	750w	7 1/2"
12	6" Strand Fresnelite	750w	7 1/2"
4	8" Strand Fresnelite	1000w	10"
2	Strand Lekolite 4" Zoom 25°-50°	500w	6"
10	6x9 29° Altman Base-up	750w	7 1/2"
26	6x9 29° Altman Axial	575w	7 1/2"
14	6x9 29° Strand Lekolite	750w	7 1/2"
6	6x12 21° Altman Base-up	750w	7 1/2"
36	6x12 21° Altman Axial	575w	7 1/2"
8	6x16 15° Strand Lekolite	1000w	7 1/2"
6	6x12 11° Strand Lekolite Long	1000w	7 1/2"
12	6x22 11° Altman	1000w	7 1/2"
12	8x13 10° Strand Lekolite	1000w	10"
24	10° ETC Source Four	750w	12"
60	Par 64 Altman Aluminum	1000w	10"
12	8' 4 Circuit Borderlights	16 @ 200w	6 1/2" x 5 1/2"
6	14" Scoop	1000w	16"
16	10" Scoop	400w	10"
12	3" Altman Par 36 Pin Spots	30w/6v	4"
1	HighEnd Dataflash AF1000		

## Followspots

2 Strong Super Trouper 2kw Xenon permanently mounted in separate booths at the rear of the balcony.

## Cable & Hardware

24 – 6" tophats  
6 – 6" barndoors  
4 – 8" barndoors  
50 – pattern holders  
20 – 12" sidearms single tee  
10 – 24" sidearms double tee  
8 – light tree bases & 14' pipes  
4 – 25' 5 pin DMX cable  
4 – 50' 5 pin DMX cable  
4 – 100' 5 pin DMX cable  
40 – 5' stage pin extension cables  
35 – 10' stage pin extension cables  
25 – 15' stage pin extension cables  
20 – 20' stage pin extension cables  
35 – 25' stage pin extension cables

### Cable & Hardware Continued

12 – 50' stage pin extension cables  
100 – stage pin 2-fers  
Various stage pin to Edison adapters

### Film, Video, & Projection Equipment

1 Matte White Screen 18' x 38' (Line Set N<sup>o</sup> 10)  
1 Panasonic PT-L797PWU, 2200 ANSI Lumens, LCD Projector

### Sound

#### Power

1 @ 200 amp, 3 phase, 4 wire, 120/208 volt, cam-lok supplied or tails needed, with isolated ground for audio, located upstage right in the bustle.

4 @ 20 amp, 120 volt, edison receptacles located in the orchestra pit, with isolated ground

4 @ 20 amp, 120 volt, edison receptacles located on stage level, two downstage left and two downstage right, with isolated ground

2 @ 20 amp, 120 volt, edison receptacles in the sound pit with isolated ground

#### Wiring

##### Downstage Right

Microphone inputs 1 through 24, return lines 1 through 8, and 4 amplified monitor outputs. Tie in location for the line arrays and subwoofers. Tie in location for 4 dry lines to light booth.

##### Downstage Left

Microphone inputs 25 through 48, return lines 9 through 16, and 4 amplified monitor outputs.

##### Orchestra Pit

4 amplified monitor outputs.

#### Control Location

House mix position is at the center rear of house, under a balcony, and is 12' wide by 6' deep. Snake length from stage right to the mix position needs to be 150' in order to be run in the house cable trough.

#### Hearing Assist System

The theater is equipped with a Sennheiser Infrared System with emitter panels located underneath the center of the proscenium. All seats in the auditorium are capable of receiving the infrared signals and there are 15 headsets available.



### Monitor/Paging System

The paging system covers the dressing rooms, hallways, stairwells, loading dock area and green room and is capable of having a program input. Paging to these areas is available from downstage right or downstage left.

### Production Communication

Clearcom 4 Channel Base Station  
4 – RS501 Single Channel Beltpacks  
4 – RS502 Dual Channel Beltpacks  
11 – CC85 Single Muff Headsets  
2 – CC250 Dual Muff Headsets  
2 – HS6 Handsets  
3 – RM222 Dual Channel Speaker Stations – Installed in Light & Spot Booths

### Equipment Inventory

#### Mixing Console

2- Soundcraft Performer Si 32 with a compact 32 stagebox, total possible number of inputs is 64 XLR.

#### Playback

1 – Tascam CD-01U CD Player  
1 – Sony MDS-E11 Minidisk

#### Speakers

16 – RCF TTL33A Powered Line Array Boxes (8 per side)  
5 – RCF TTL 052 Front fill speakers  
2 – RCF TTL 052 Underbalcony fill speakers  
4 – RCF TT36A Powered Subs  
Main Sound system is processed in the boxes and is network controlled through RDNet  
2 – EAW KF300 & LA400  
4 – Apogee AE- 4  
6 – EAW SM200 Monitors

#### Amplifiers

2 – Crown K2, 500 watts @ 8 ohms per side, (monitors – EAW KF-300 and LA 400)  
2 – Crest CA9, 900 watts @ 4 ohms per side, (monitors)

#### Microphones

3 – Shure U4D UHF Tunable Receivers (Dual Channel)  
6 – Shure U1 Tunable Body Pack Transmitters  
6 – Countryman B-3 Elements for Above Transmitters  
4 – Shure U2/Beta 87 Tunable Handheld Transmitters  
5 – Shure Beta 87  
10 – Shure SM58  
10 – Shure SM57

- 4 – Shure SM81
- 6 – Shure SM94
- 4 – Sennheiser 421
- 1 – Audix D2
- 1 – Audix D4
- 3 – Audix D6
- 2 – AKG C414
- 4 – Crown PCC-166
- 4 – Crown PZM 30R B
- 6 – Audio Technica AT853
- 6 – Stewart Active Direct Box

**Props**

Orchestra Pit – Gala Spiralift

Width	38' 3"
Depth, at center	12' 2"
Depth, at edges	7' 6"
Depth under stage at pit level	6' 0"
Total depth at pit level	18' 2"
Playing depth below stage	8' 0"

Notes: The orchestra pit is curved

There are three columns supporting the apron located in the orchestra pit.

Orchestra Equipment

- 24 – Wenger black Student chairs
- 36 – Wenger black Playwright chairs
- 60 – Manhasset black music stands
- 45 – Music stand lights
- 1 – Wenger Instrumental Conductor's Stand
- 1 – Conductor's Podium 2' 8" x 3' 4" x 7" high

Instruments

- 1 – Steinway D 9' Concert Grand Piano
- 1 – Kawai Upright Piano

Platforms

- 4 – Wenger 4' x 8' x 8"
- 1 – Wegner 4' x 6' x 16"
- 3 – Wegner 4' x 8' x 16"

Dance Floor

Harlequin Cascade with panel seam parallel to the proscenium opening. Total size 52' wide by 27' deep.

Lectern

- 1 – Lectern, with reading lights and built in microphone

## Wardrobe

### Dressing Rooms

- 1 – 14' x 32' 6" with 21 make-up stations and 5 sinks
- 1 – 10' x 26' 6" with 18 make-up stations and 4 sinks
- 2 – 8' x 15' with 6 make-up stations and 1 sink
- 1 – 9' x 11' with 4 permanent, 2 portable make-up stations and 1 sink
- 1 – 9' x 9 with 4 permanent, 1 portable make-up stations and 1 sink
- 1 – 12' x 18' orchestra dressing room

### Wardrobe Area

The wardrobe area is located in the basement near the dressing rooms, and adjacent to the washer/dryer room. It is 19' x 17' and also equipped with one deep sink. There is one structural column located in the area as an obstruction.

### Irons & Ironing Boards

- 2 – Household Irons and Ironing Boards

### Steamer

- 2 – Jiffy Steamers

### Washer/Dryer

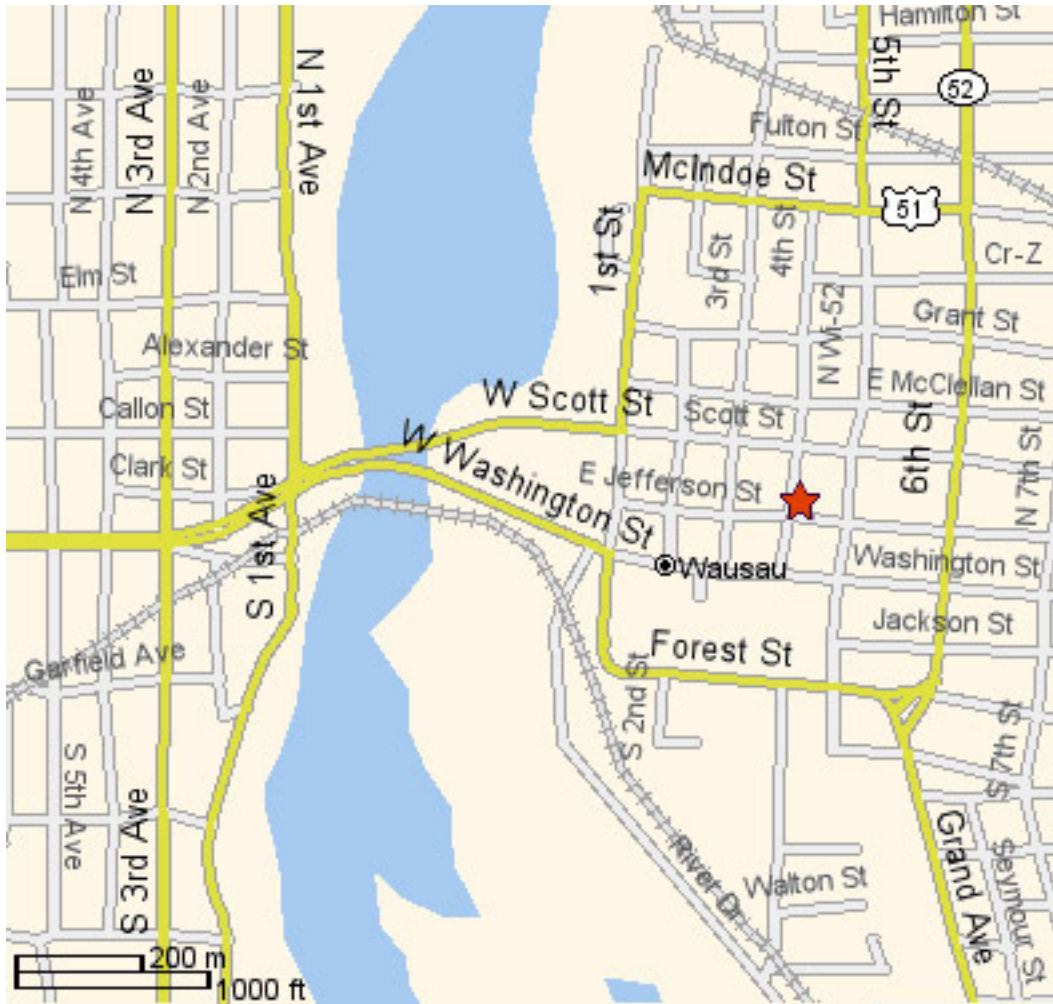
- 2 – Household Washers
- 2 – Household Dryers

### Garment Racks

- 12 – Z-Racks, 5' long and either 5' or 6' high, 2' deep

### Notes

All make-up stations are equipped with light surrounds and 2 duplex receptacles, on a separate 20 amp, 120 volt circuit. The countertops are mounted at wheelchair accessible height of 31" from floor.



**From the East or West**

From Highway 29 take the exit for 51/39 going north. Take, Exit 192 – Bus52, follow Bus 52 east crossing the Wisconsin River. Merge to the left lane Downtown Exit. At the stoplight turn left onto First Street. Go one block and turn right on Jefferson Street past the Theater to Sixth Street. Turn left on Sixth Street (one way). Follow Sixth Street to Scott Street. Left on Scott Street, loading dock is off Scott Street on the left.

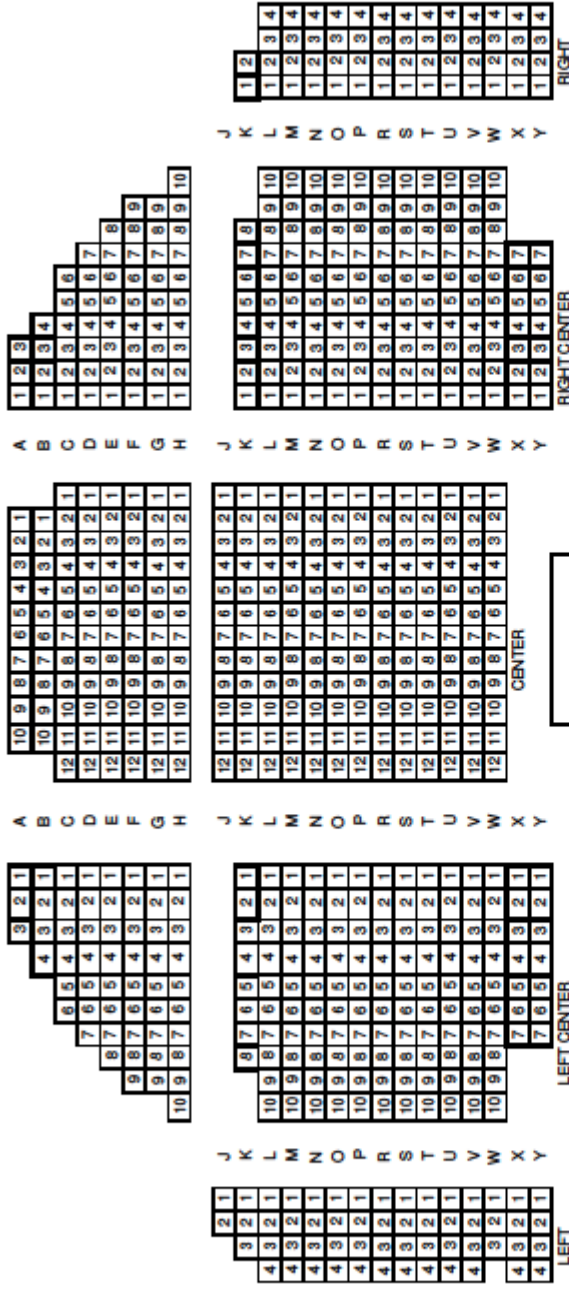
**From the South**

From 51/39 going north. Take, Exit 192 – Bus52, follow Bus 52 east crossing the Wisconsin River. Merge to the left lane Downtown Exit. At the stoplight turn left onto First Street. Go one block and turn right on Jefferson Street past the Theater to Sixth Street. Turn left on Sixth Street (one way). Follow Sixth Street to Scott Street. Left on Scott Street, loading dock is off Scott Street on the left.

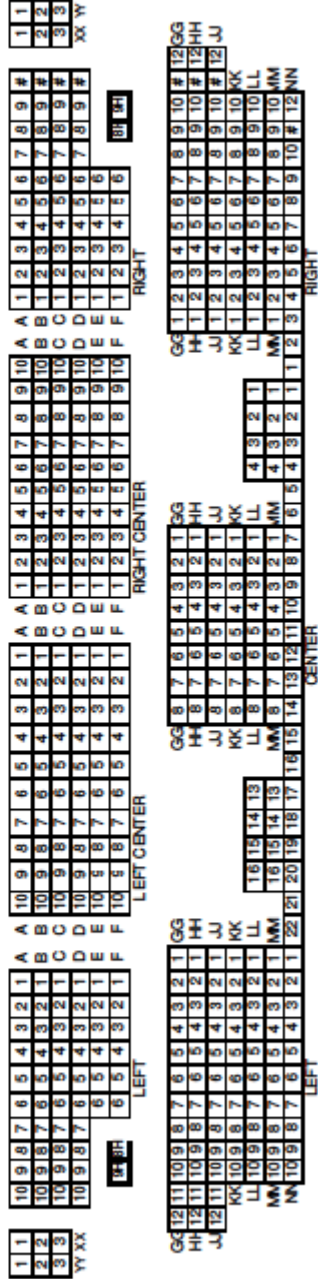
**From the North**

From 51/39 going south. Take, Exit 192 – Bus52, follow Bus 52 east crossing the Wisconsin River. Merge to the left lane Downtown Exit. At the stoplight turn left onto First Street. Go one block and turn right on Jefferson Street past the Theater to Sixth Street. Turn left on Sixth Street (one way). Follow Sixth Street to Scott Street. Left on Scott Street, loading dock is off Scott Street on the left.

**STAGE**



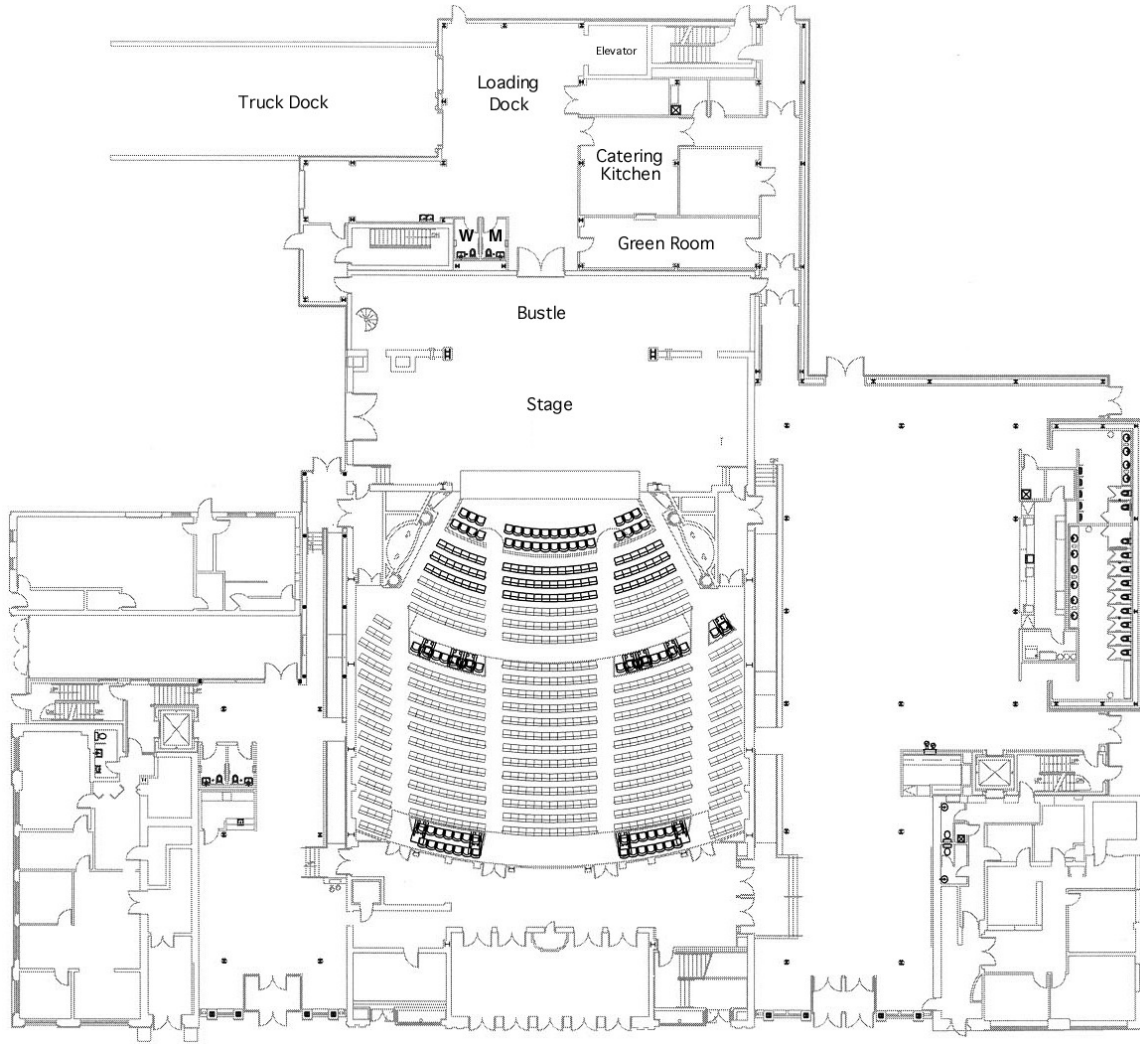
**BALCONY**



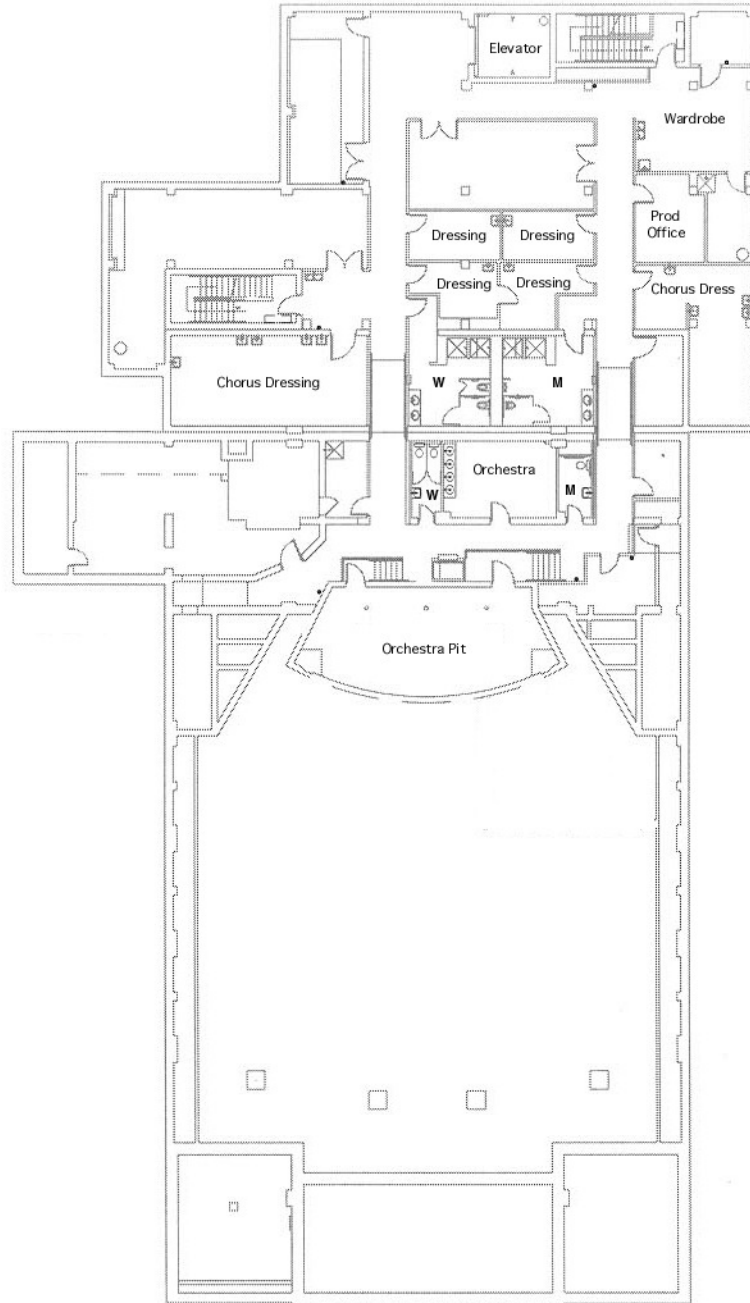
**Lineset Schedule**  
**Grand Theater - Wausau, WI**

Set #	House Hang	Distance From Proscenium	Arbor Capacity	High Trim
1	#1 Legs (40' Opening)	1' 3"	1116	53'
2	1st Electric (Permanent)	2' 3"	810	36' 4"
3		3' 3"	900	53'
4		4' 5"	1116	53'
5	#2 Legs (40' Opening)	5' 0"	1116	53'
6		5' 7"	900	53'
7		6' 1"	900	53'
8	Screen Masking	6' 6"	900	53'
9	Traveler	7' 0"	900	53'
10	Movie Screen (Permanent)	7' 7"	900	31'0"*
11	#1 Border	8' 7"	1116	53'
12	#3 Legs (40' Opening)	9' 0"	900	53'
13	2nd Electric (Permanent)	10' 3"	864	36' 4"
14		11' 1"	900	53'
15		11' 7"	900	53'
16		12' 2"	900	53'
17		12' 8"	900	53'
18		13' 3"	1116	53'
19		14' 3"	900	53'
20	#2 Border	14' 8"	900	53'
21	#4 Legs (40' Opening)	15' 0"	900	53'
22	3rd Electric (Permanent)	15' 11"	864	35' 4"
23		16' 10"	900	53'
24		17' 10"	900	53'
25		19" 0"	900	53'
26	Traveler	19' 6"	900	53'
27		20' 7"	900	53'
28	#3 Border	21' 1"	900	53'
29	#5 Legs (38' Opening)	21' 5"	900	53'
30	4th Electric (Permanent)	22' 1"	1080	35' 4"
31	Cyc Electric (Permanent)	23' 1"	1044	36' 4"
32		24' 6"	900	53'
33		24' 11"	900	53'
34		25' 3"	900	53'
35		25' 10"	900	53'
	Hole in Back Wall	26' 11"		

\* Measured to the bottom of the screen



Main Floor Plan Grand Theater



Basement Floor Plan Grand Theater



